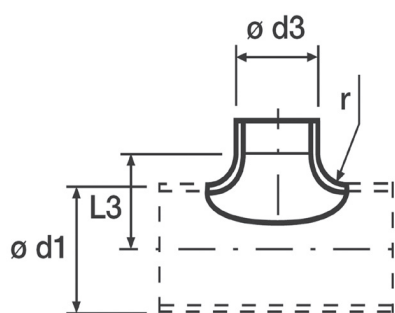


ATTACCO A SELLA 90°



DESCRIZIONE

Attacchi a sella in lamiera zincata:
-EAS Attacchi a sella 90°
-EASG Attacchi a sella 90° guarnito



DIMENSIONI EAS

D1/D2 mm	IP	L mm	D1/D2 mm	IP	L mm
80/80	40	52	250/250	40	150
100/80	40	60	315/250	40	182
125/80	40	75	355/250	40	225
160/80	40	92	400/250	40	225
200/80	40	112	315/315	40	182
250/80	40	137	355/315	40	-
100/100	40	65	400/315	40	-
125/100	40	78	355/355	40	-
160/100	40	95	400/355	40	-
200/100	40	115	450/355	40	-
250/100	40	140	500/355	40	-
315/100	40	173	560/355	40	-
125/125	40	83	630/355	40	-
160/125	40	100	400/400	-	-
200/125	40	115	450/400	-	-
250/125	40	145	500/400	-	-
315/125	40	178	560/400	-	-
400/125	40	220	630/400	-	-
160/160	40	105	450/450	-	-
200/160	40	125	500/450	-	-
250/160	40	150	560/450	-	-
315/160	40	182	630/450	-	-
400/160	40	225	500/500	-	-
200/200	40	125	560/500	-	-
250/200	40	150	630/500	-	-
315/200	40	182	560/560	-	-
355/200	40	225	630/560	-	-
400/200	40	225	630/630	-	-