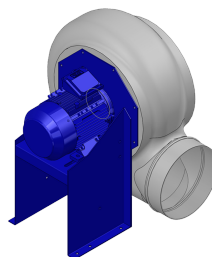


Dati di ricerca

Portata[m3/h]	3149
Pressione[Pa]	543.2
Tipo di pressione	Psta
Alimentazione	all
Densità[m3/h]	1.205



Coclea stampata Pe-el conduttivo - girante PP -
supporto motore in lamiera di acciaio verniciato polveri
- viteria acciaio INOX

Etichetta

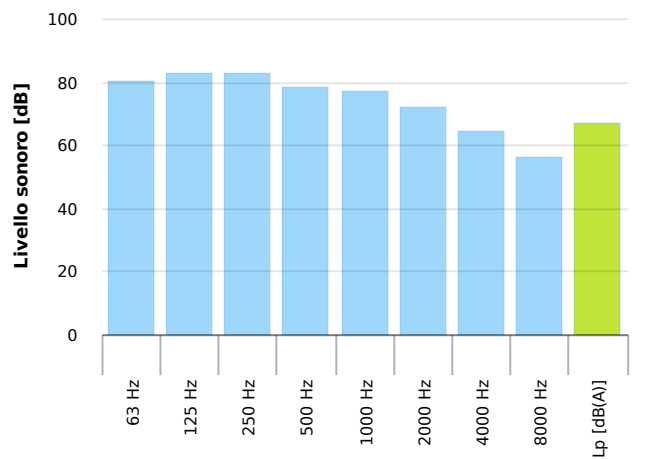
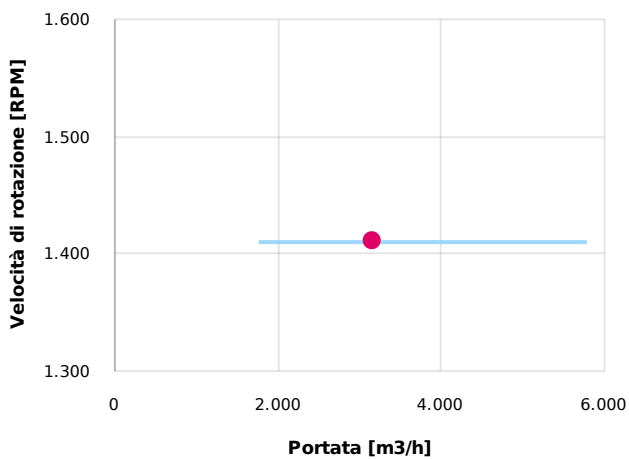
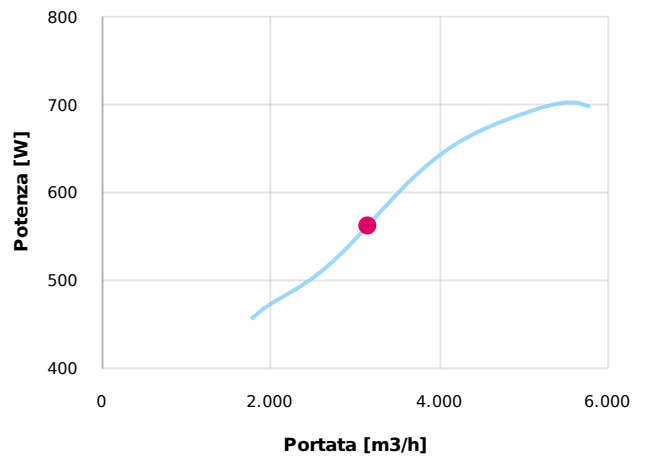
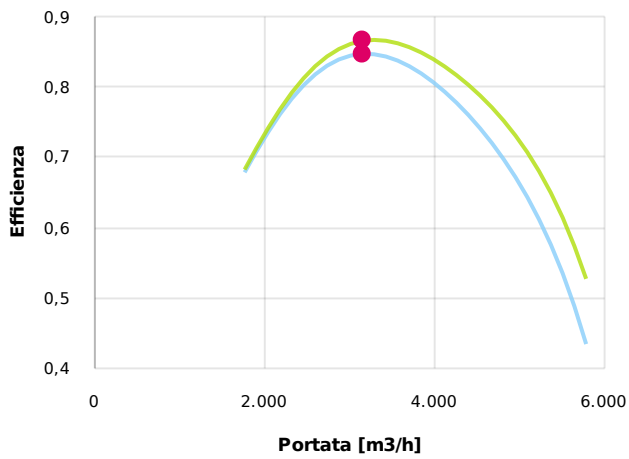
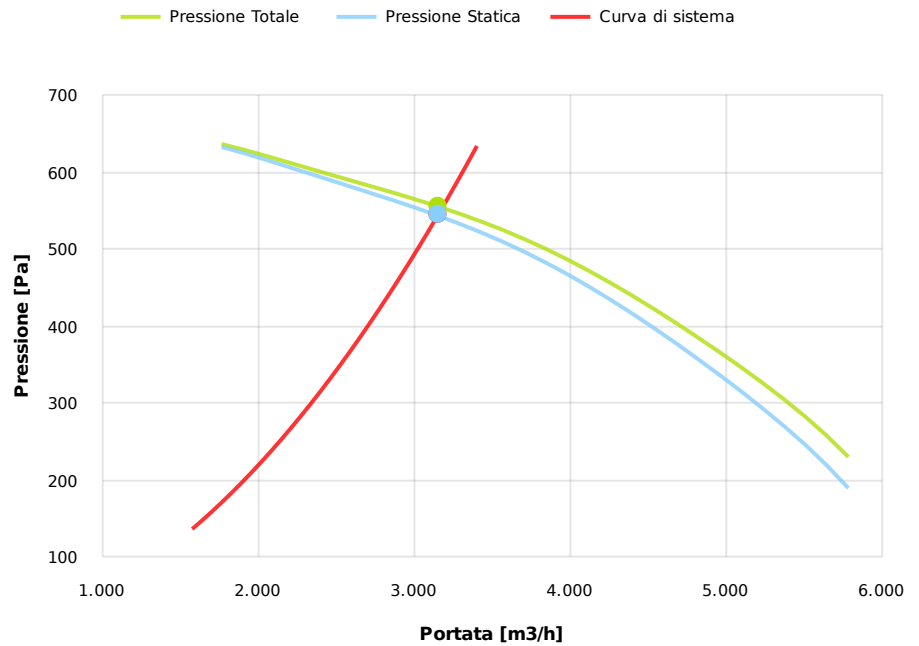
Codice	P454
Tensione[V]	400
Fasi	3
Corrente nominale[A]	
Poli	4
Peso[kg]	40
Frequenza[Hz]	50
Velocità[rpm]	1410
Potenza[kW]	1.1
IP	55
INS	

Tabella motori

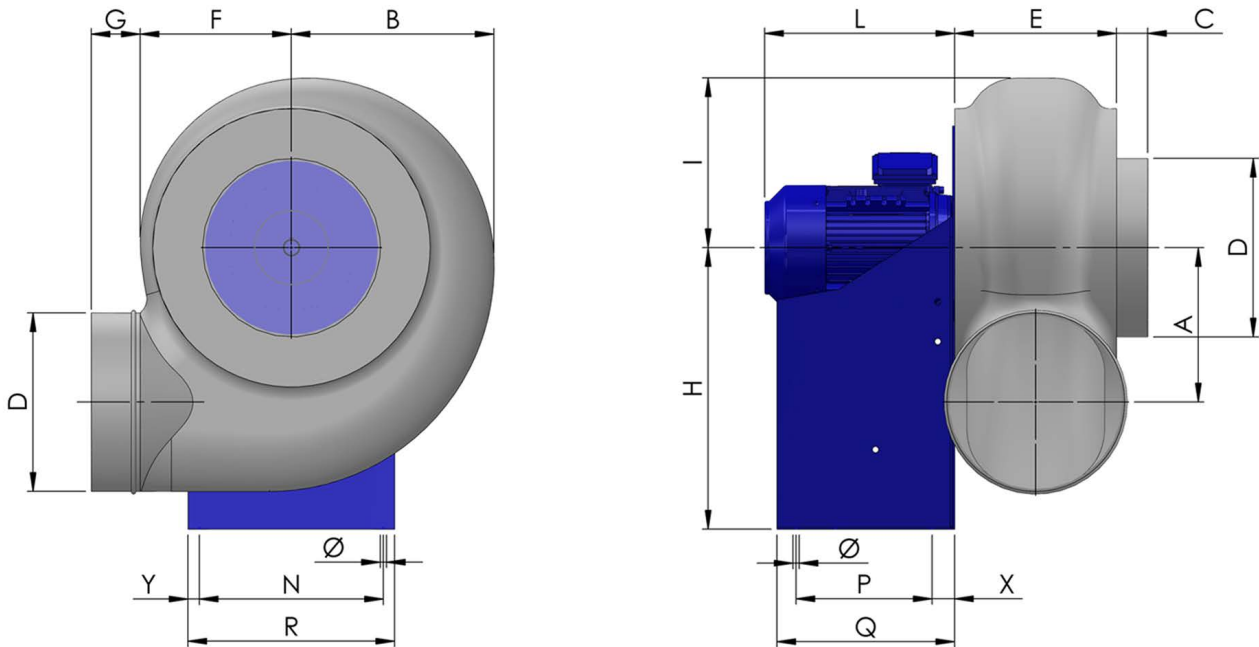
Classe IE	IE1	IE2	IE3
Taglia	90S	90	90S
Potenza[kW]	1.1	1.1	1.1
Corrente nominale[A]	2.64	2.75	2.6
Tensione[V]	400	400	400
Cos φ	0.79	0.71	0.72
n	0.762	0.814	0.841

Punto di lavoro

Q [m3/h]	3149
Psta [Pa]	543.2
Ptot [Pa]	555.1
Pin [kW] [W]	562.3
nsta	0.847
ntot	0.865
Rpm	1410



Dimensioni



A	B	C	D	E	F	G	H	I	L	N	\varnothing	P	Q	
324	400	40	355	287	395	55	550	330	290	370	11	170	250	
				R					X					
				410					40					
											Y			
											20			

Configurazioni & cad

