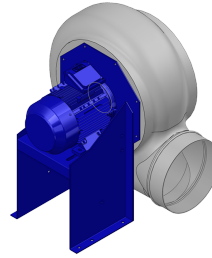


Dati di ricerca

Portata[m3/h]	1679
Pressione[Pa]	175.9
Tipo di pressione	Psta
Alimentazione	all
Densità[m3/h]	1.205



Coclea stampata Pe-el conduttivo - girante PP -
supporto motore in lamiera di acciaio verniciato polveri
- viteria acciaio INOX

Etichetta

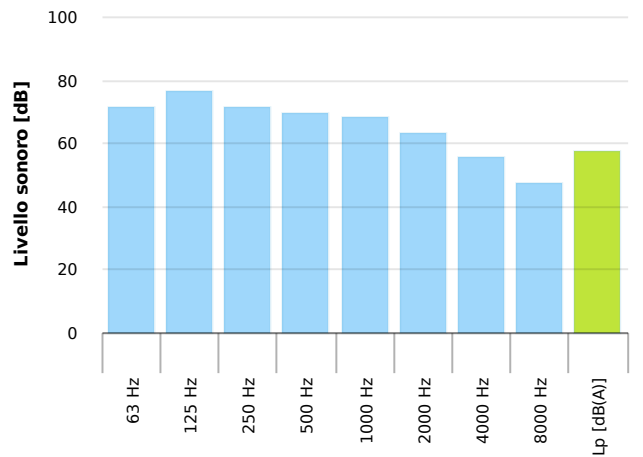
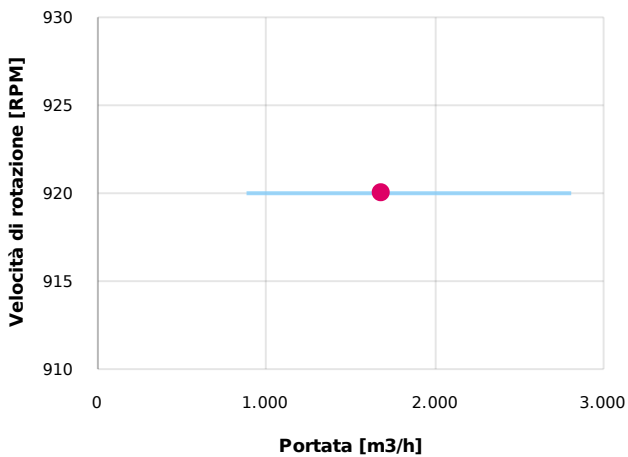
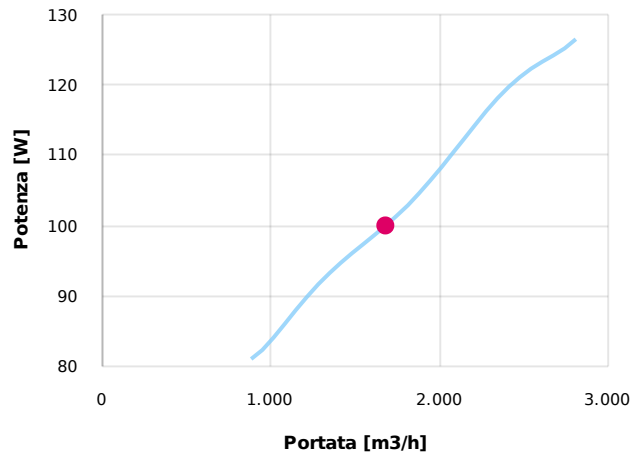
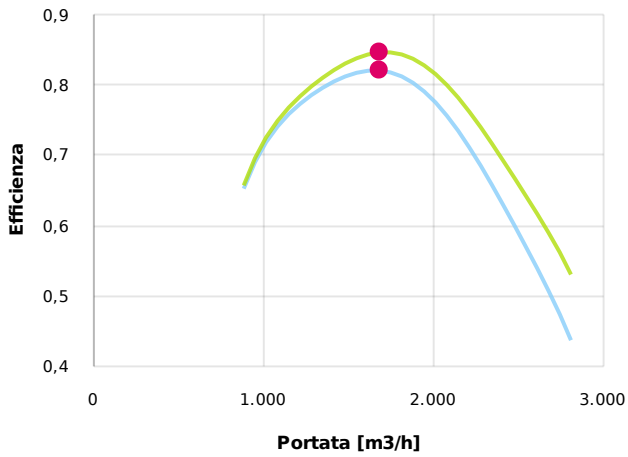
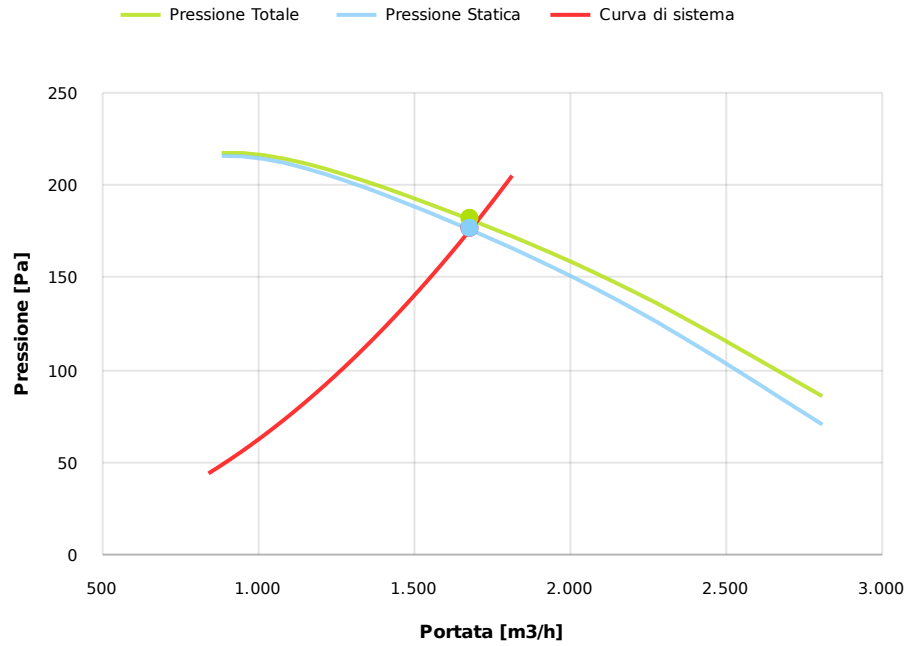
Codice	P406
Tensione[V]	400
Fasi	3
Corrente nominale[A]	
Poli	6
Peso[kg]	30
Frequenza[Hz]	50
Velocità[rpm]	920
Potenza[kW]	0.25
IP	55
INS	

Tabella motori

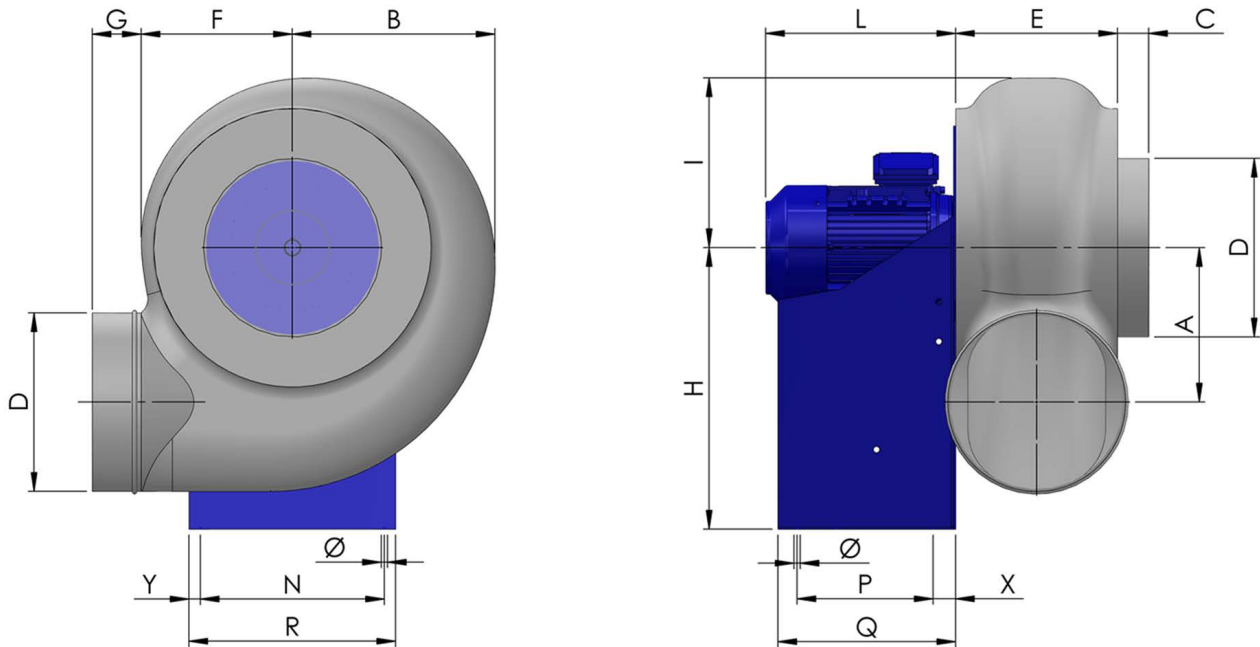
Classe IE	IE1
Taglia	71
Potenza[kW]	0.25
Corrente nominale[A]	0.87
Tensione[V]	400
Cos φ	0.7
n	0.59

Punto di lavoro

Q [m3/h]	1679
Psta [Pa]	175.9
Ptot [Pa]	181.4
Pin [kW] [W]	99.97
nsta	0.82
ntot	0.846
Rpm	920



Dimensioni



A	B	C	D	E	F	G	H	I	L	N	Ø	P	Q
290	356	40	315	252	264	55	495	295	220	325	11	170	250
R				X				Y					
365				40				20					

Configurazioni & cad

