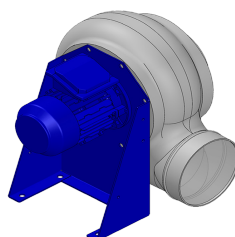


## Dati di ricerca

Portata[m <sup>3</sup> /h]	1113
Pressione[Pa]	155.4
Tipo di pressione	Psta
Alimentazione	all
Densità[m <sup>3</sup> /h]	1.205



Coclea stampata Pe - girante PP - Supporto motore in lamiera di acciaio verniciato polveri - Viteria acciaio INOX

## Etichetta

Codice	P356
Tensione[V]	400
Fasi	3
Corrente nominale[A]	
Poli	6
Peso[kg]	23
Frequenza[Hz]	50
Velocità[rpm]	930
Potenza[kW]	0.18
IP	55
INS	

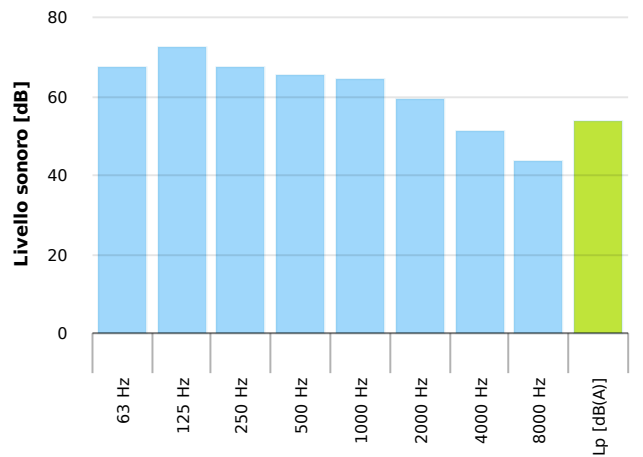
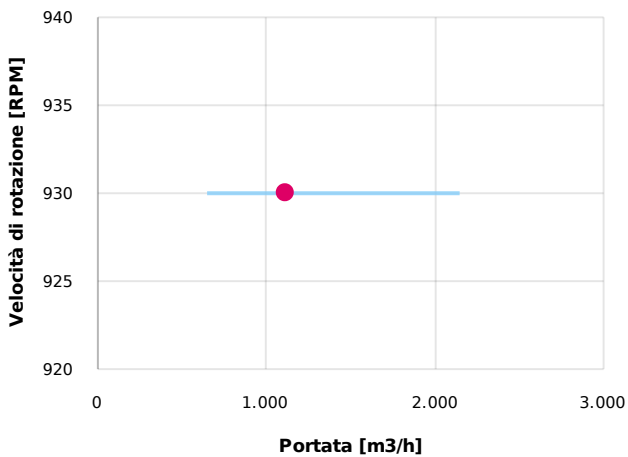
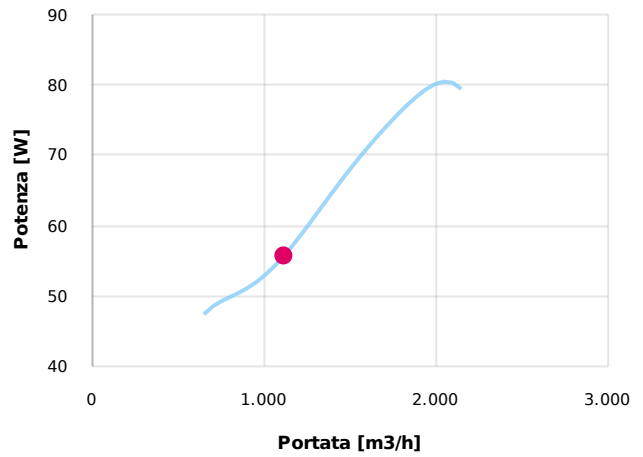
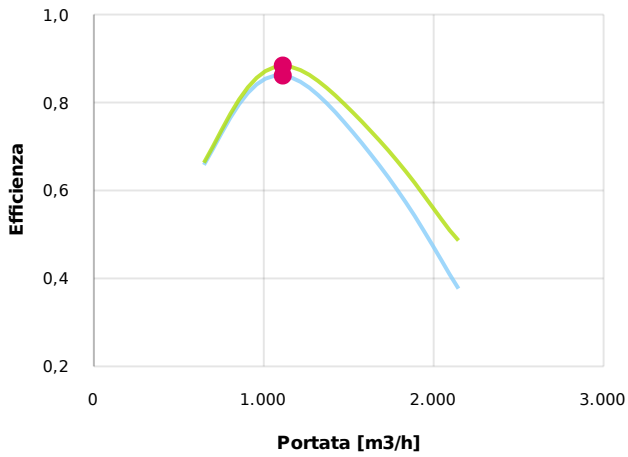
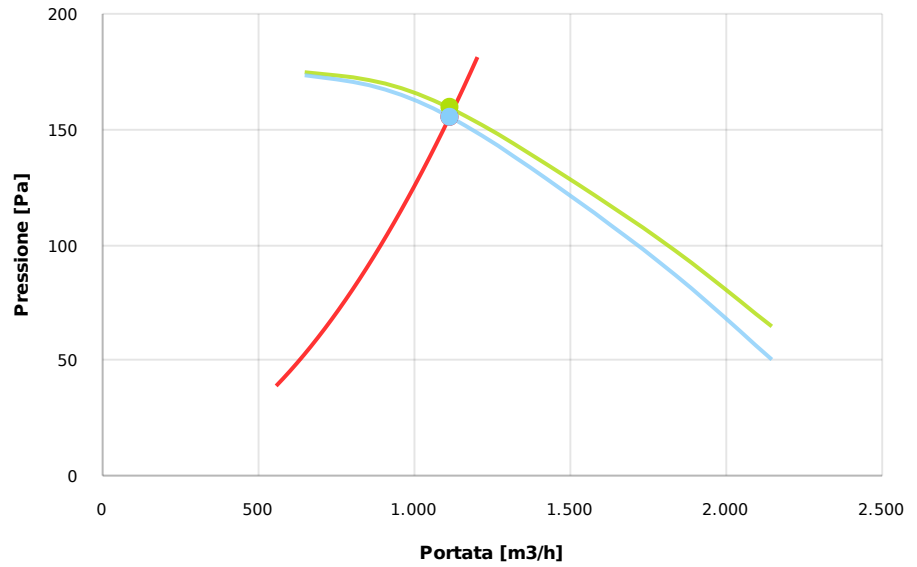
## Tabella motori

Classe IE	IE1
Taglia	71
Potenza[kW]	0.18
Corrente nominale[A]	0.7
Tensione[V]	400
Cos φ	0.66
n	0.56

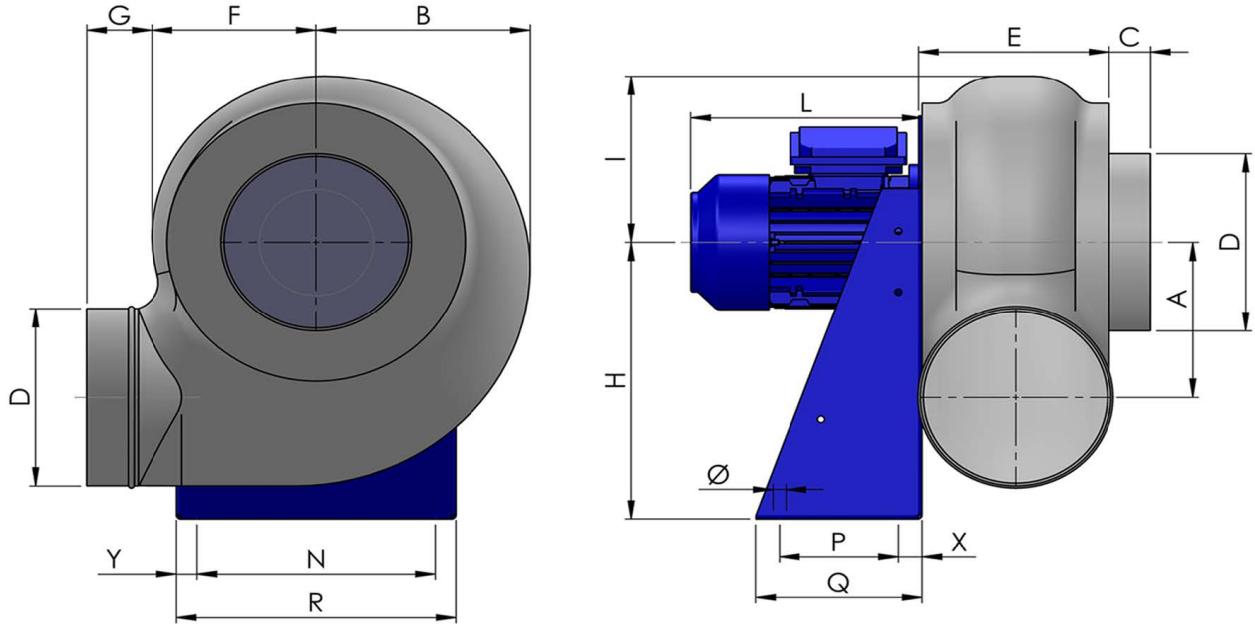
## Punto di lavoro

Q [m3/h]	1113
Psta [Pa]	155.4
Ptot [Pa]	159.3
Pin [kW] [W]	55.67
nsta	0.861
ntot	0.883
Rpm	930

— Pressione Totale — Pressione Statica — Curva di sistema



## Dimensioni



A	B	C	D	E	F	G	H	I	L	N	Ø	P	Q
260	312	40	280	237	230	55	445	270	210	355	11	150	230
R			X					Y					
390			40					175					

## Configurazioni & cad

