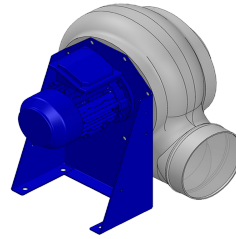


Dati di ricerca

Portata[m3/h]	3435
Pressione[Pa]	1480
Tipo di pressione	Psta
Alimentazione	all
Densità[m3/h]	1.205



Coclea stampata Pe - girante PP - Supporto motore in lamiera di acciaio verniciato polveri - Viteria acciaio INOX

Etichetta

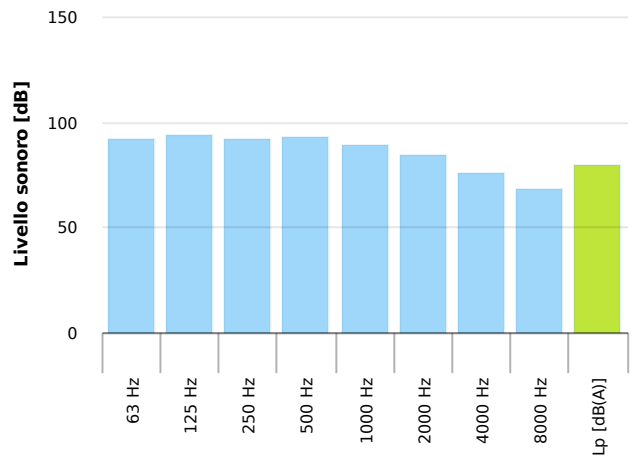
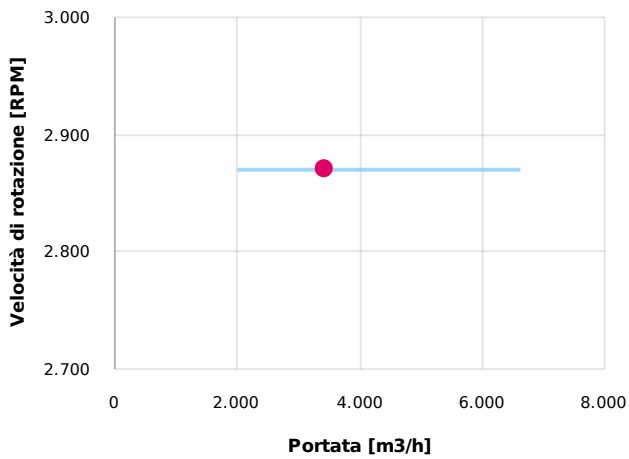
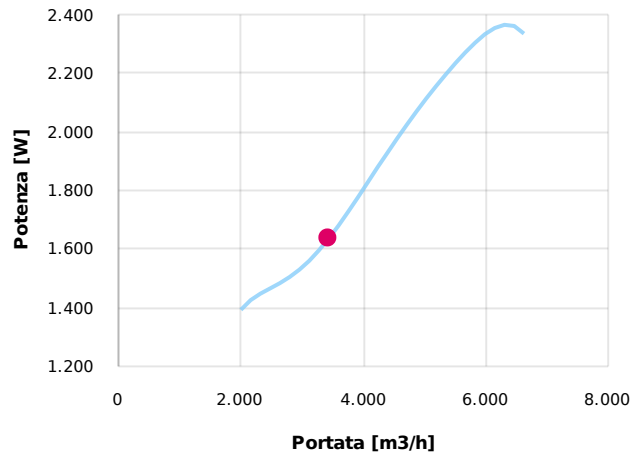
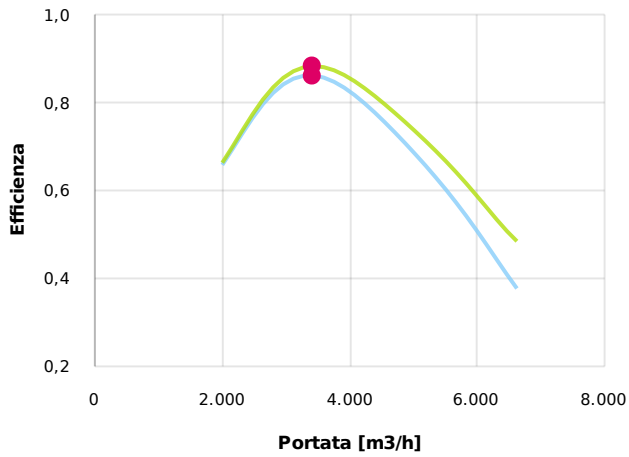
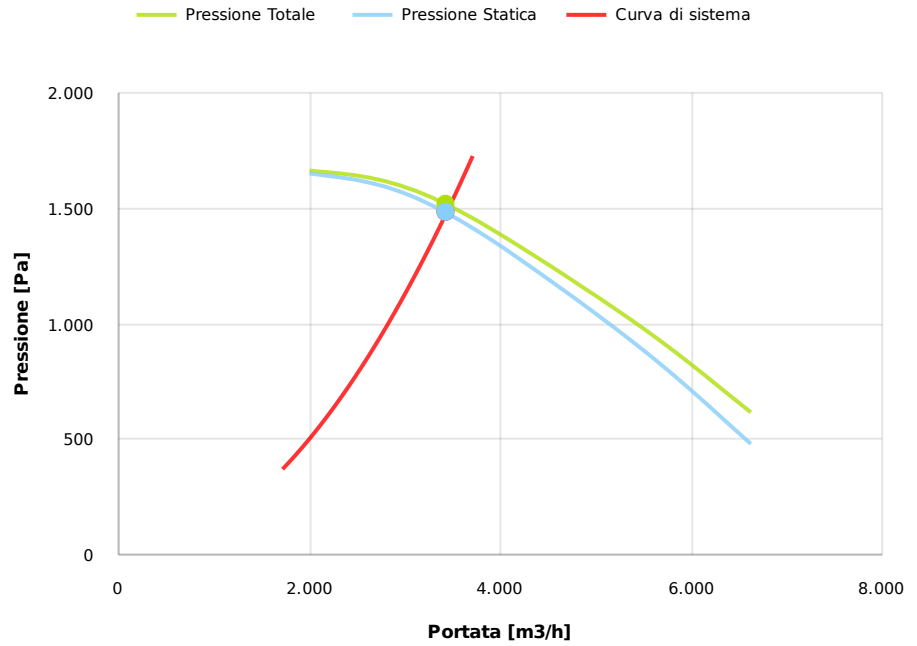
Codice	P352
Tensione[V]	400
Fasi	3
Corrente nominale[A]	
Poli	2
Peso[kg]	32
Frequenza[Hz]	50
Velocità[rpm]	2870
Potenza[kW]	2.2
IP	55
INS	

Tabella motori

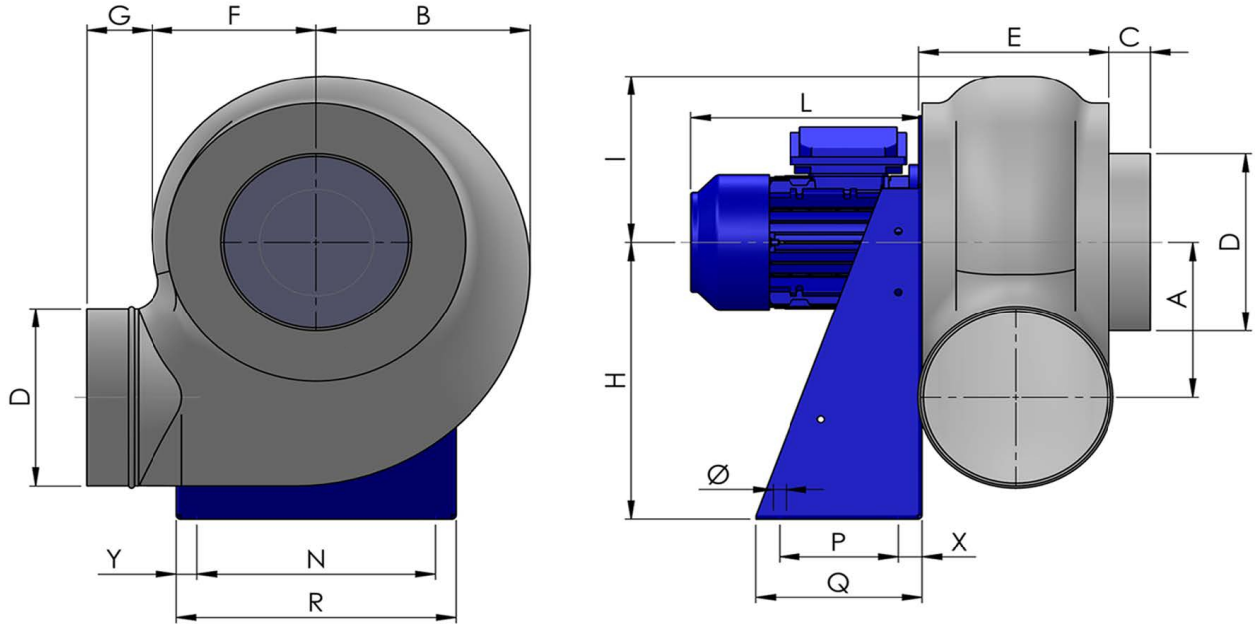
Classe IE	IE1	IE2	IE3
Taglia	90L	90L	90L
Potenza[kW]	2.2	2.2	2.2
Corrente nominale[A]	4.61	4.6	4.4
Tensione[V]	400	400	400
Cos φ	0.85	0.83	0.84
n	0.81	0.832	0.859

Punto di lavoro

Q [m3/h]	3435
Psta [Pa]	1480.
Ptot [Pa]	1517.
Pin [kW] [W]	1636.
nsta	0.861
ntot	0.882
Rpm	2870



Dimensioni



A	B	C	D	E	F	G	H	I	L	N	Ø	P	Q
260	312	40	280	237	230	55	445	290	220	355	11	150	230
			R				X						Y
			390				40						175

Configurazioni & cad

