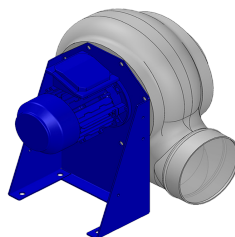


Dati di ricerca

Portata[m3/h]	795
Pressione[Pa]	205.9
Tipo di pressione	Psta
Alimentazione	all
Densità[m3/h]	1.205



Coclea stampata Pe - girante PP - Supporto motore in lamiera di acciaio verniciato polveri - Viteria acciaio INOX

Etichetta

Codice	P284
Tensione[V]	400
Fasi	3
Corrente nominale[A]	
Poli	4
Peso[kg]	14
Frequenza[Hz]	50
Velocità[rpm]	1370
Potenza[kW]	0.18
IP	55
INS	

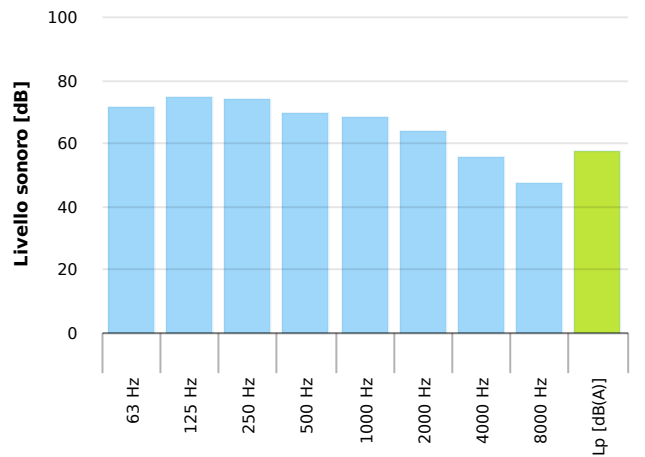
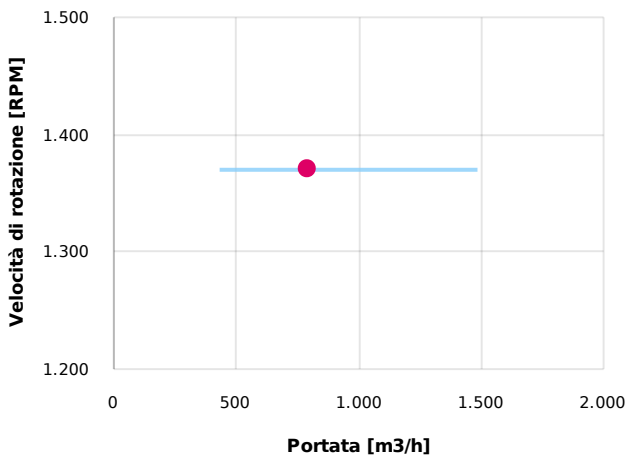
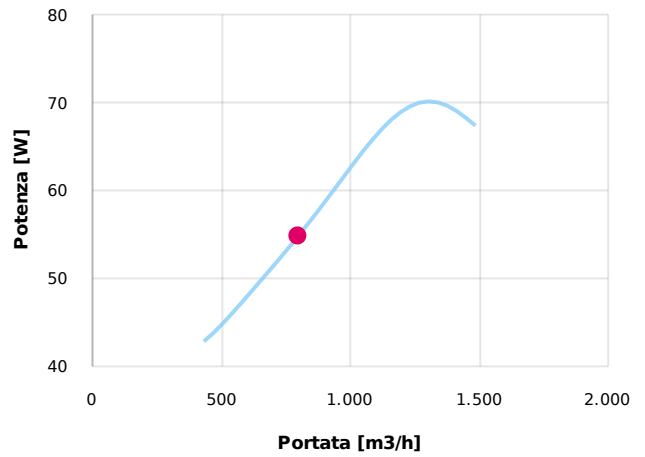
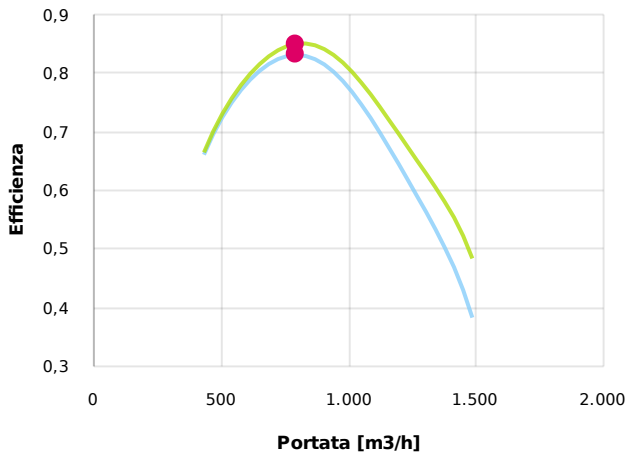
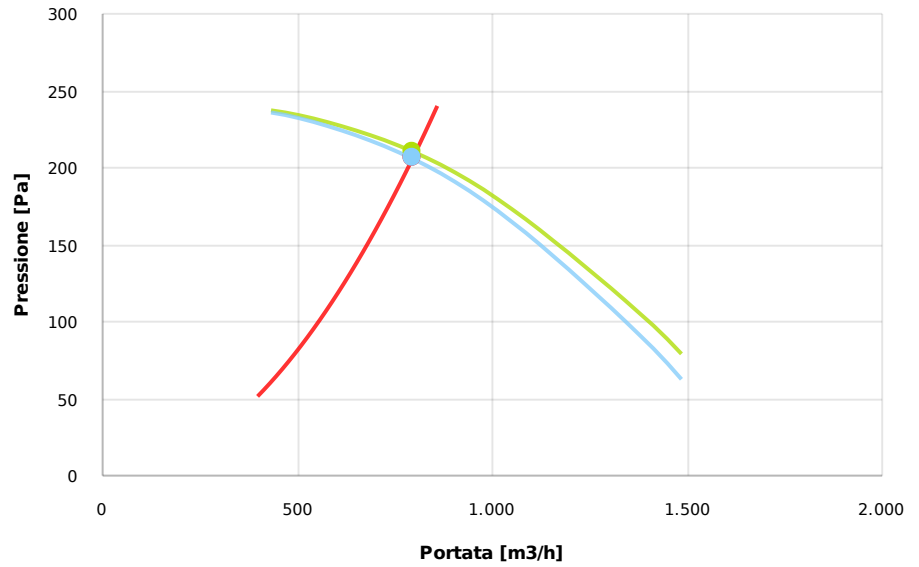
Tabella motori

Classe IE	IE1
Taglia	63
Potenza[kW]	0.18
Corrente nominale[A]	0.68
Tensione[V]	400
Cos φ	0.65
n	0.59

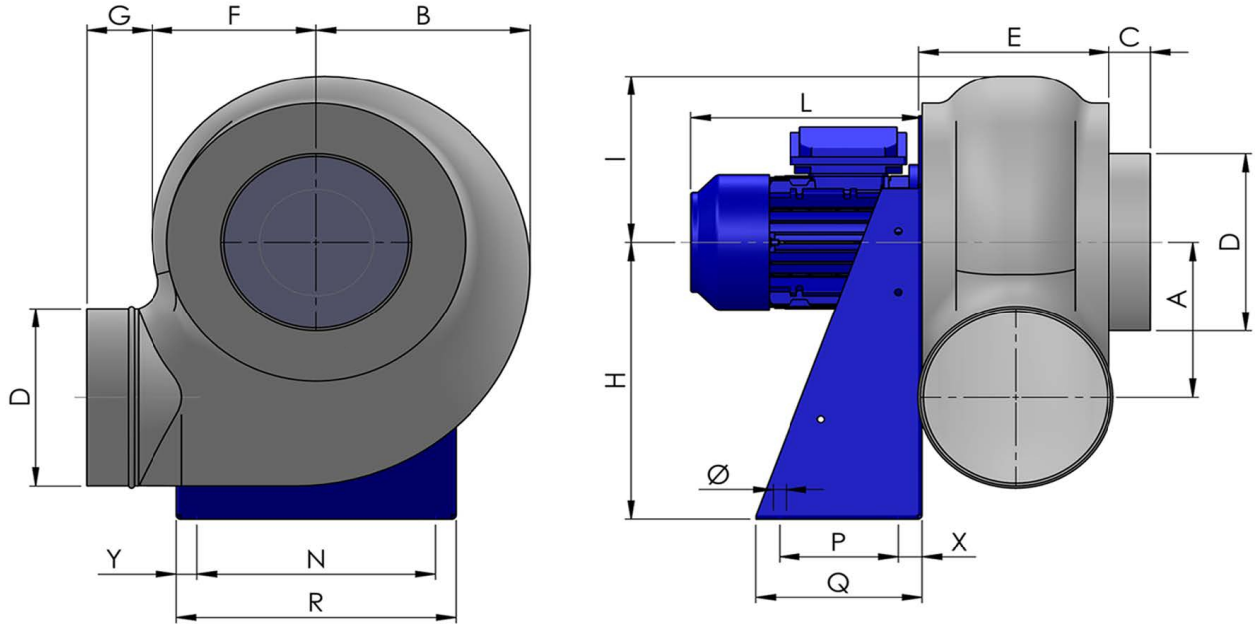
Punto di lavoro

Q [m3/h]	795
Psta [Pa]	205.9
Ptot [Pa]	210.6
Pin [kW] [W]	54.71
nsta	0.831
ntot	0.85
Rpm	1370

— Pressione Totale — Pressione Statica — Curva di sistema



Dimensioni



A	B	C	D	E	F	G	H	I	L	N	Ø	P	Q
208	255	40	225	195	190	70	350	210	190	280	11	120	190
			R				X					Y	
			316				35					18	

Configurazioni & cad

