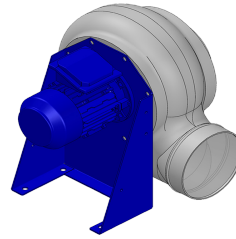


Dati di ricerca

Portata[m3/h]	1655
Pressione[Pa]	891
Tipo di pressione	Psta
Alimentazione	all
Densità[m3/h]	1.205



Coclea stampata Pe - girante PP - Supporto motore in lamiera di acciaio verniciato polveri - Viteria acciaio INOX

Etichetta

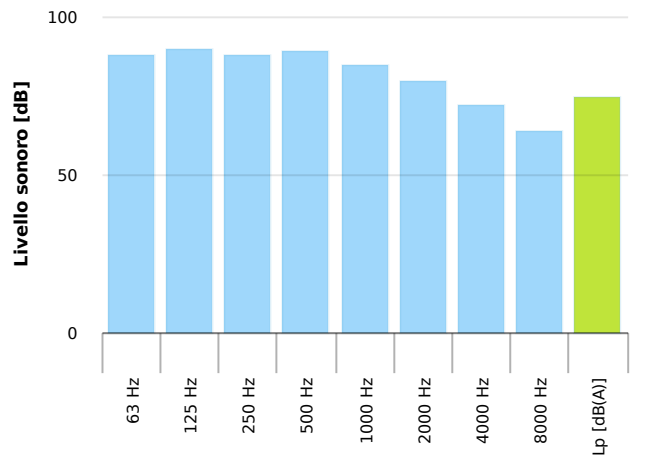
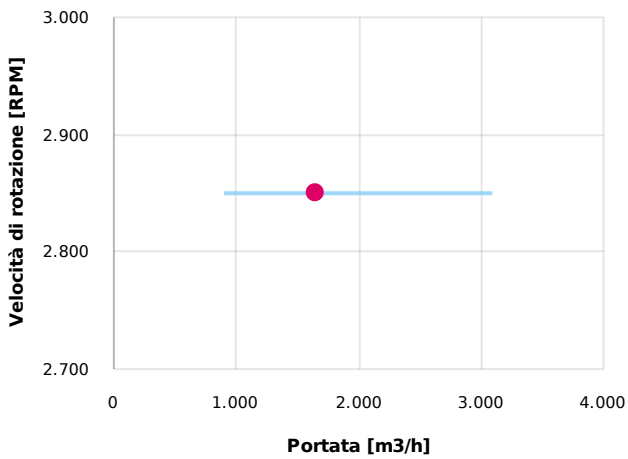
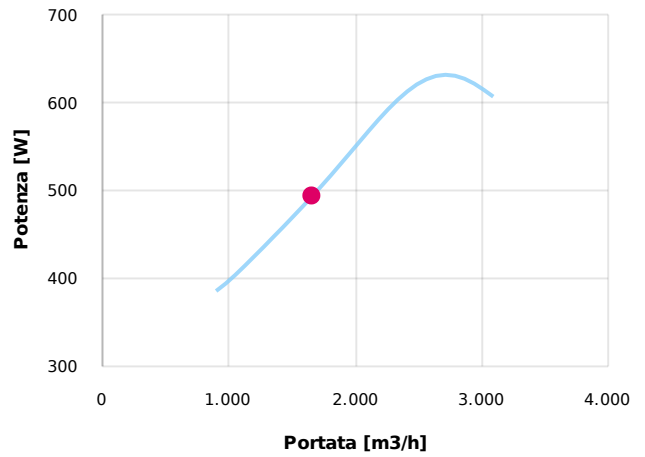
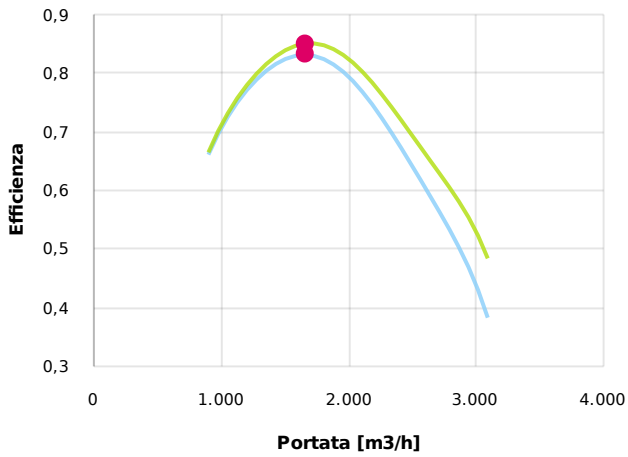
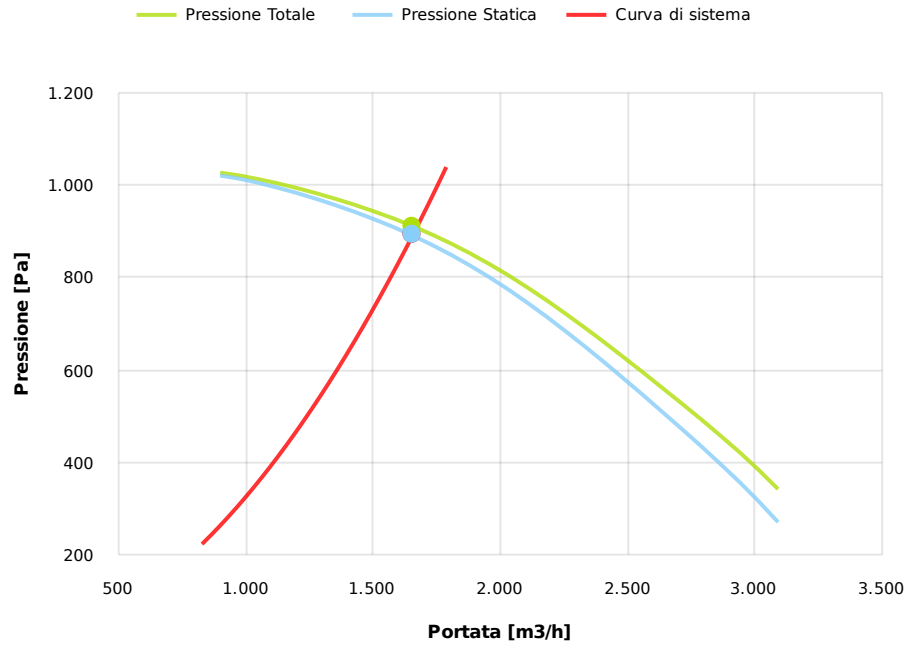
Codice	P282
Tensione[V]	400
Fasi	3
Corrente nominale[A]	
Poli	2
Peso[kg]	19
Frequenza[Hz]	50
Velocità[rpm]	2850
Potenza[kW]	0.75
IP	55
INS	

Tabella motori

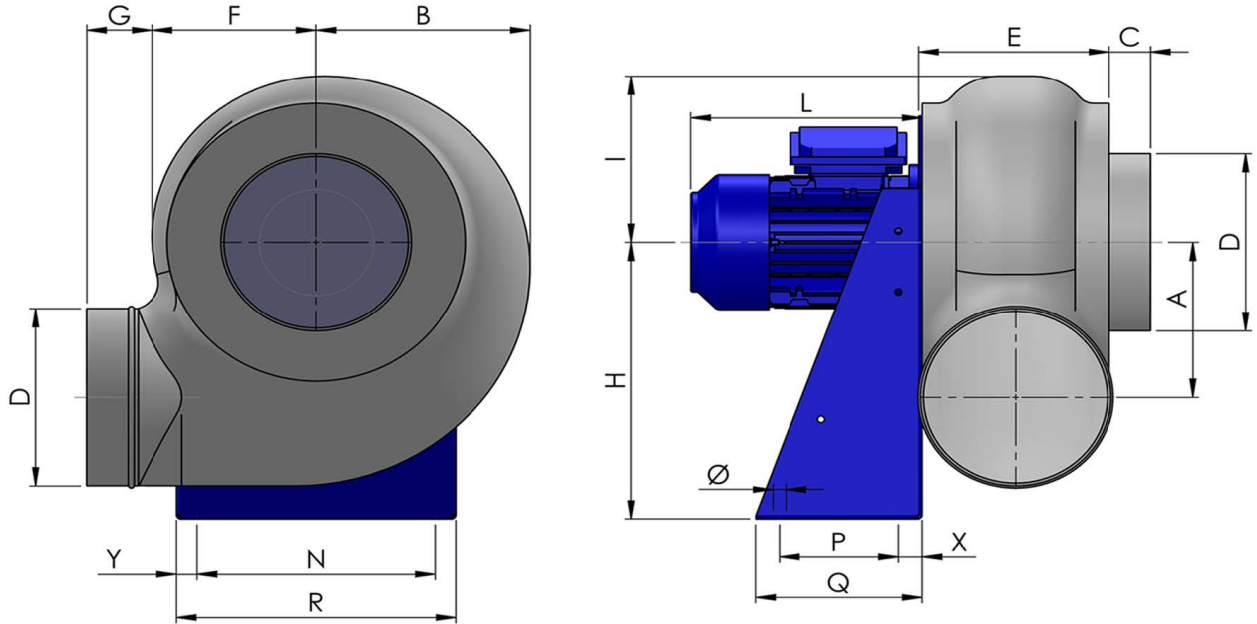
Classe IE	IE1	IE2	IE3
Taglia	80	80	80
Potenza[kW]	0.75	0.75	0.75
Corrente nominale[A]	1.83	1.73	1.7
Tensione[V]	400	400	400
Cos φ	0.82	0.81	0.81
n	0.72	0.774	0.807

Punto di lavoro

Q [m3/h]	1655
Psta [Pa]	891.0
Ptot [Pa]	911.5
Pin [kW] [W]	492.8
nsta	0.831
ntot	0.85
Rpm	2850



Dimensioni



A	B	C	D	E	F	G	H	I	L	N	Ø	P	Q
208	255	40	225	195	190	70	350	210	240	280	11	120	190
			R				X					Y	
			316				35					18	

Configurazioni & cad

