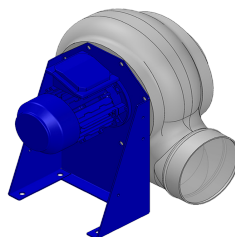


## Dati di ricerca

Portata[m3/h]	900
Pressione[Pa]	494.7
Tipo di pressione	Psta
Alimentazione	all
Densità[m3/h]	1.205



Coclea stampata Pe - girante PP - Supporto motore in lamiera di acciaio verniciato polveri - Viteria acciaio INOX

## Etichetta

Codice	P222
Tensione[V]	400
Fasi	3
Corrente nominale[A]	
Poli	2
Peso[kg]	13
Frequenza[Hz]	50
Velocità[rpm]	2800
Potenza[kW]	0.25
IP	55
INS	

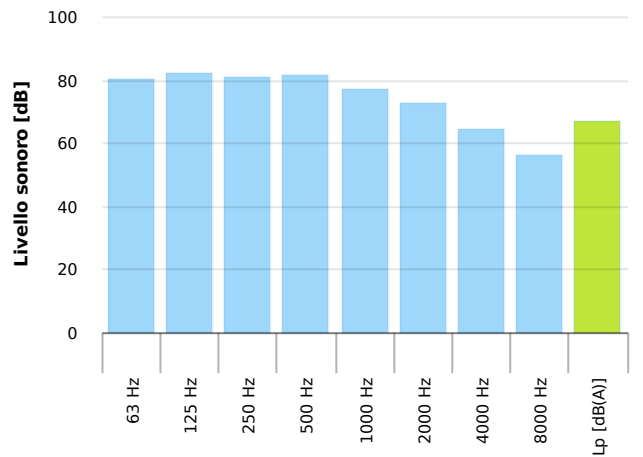
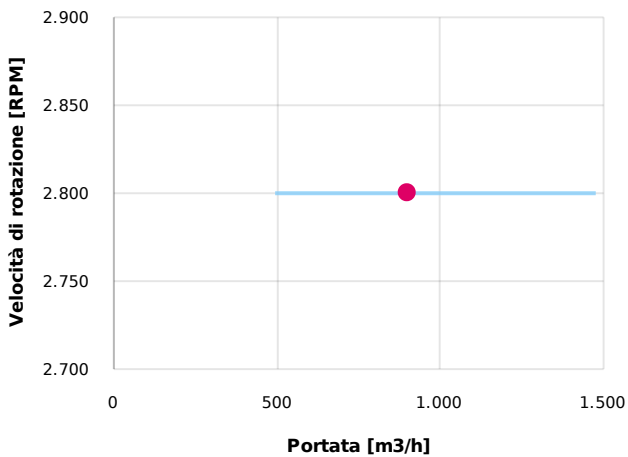
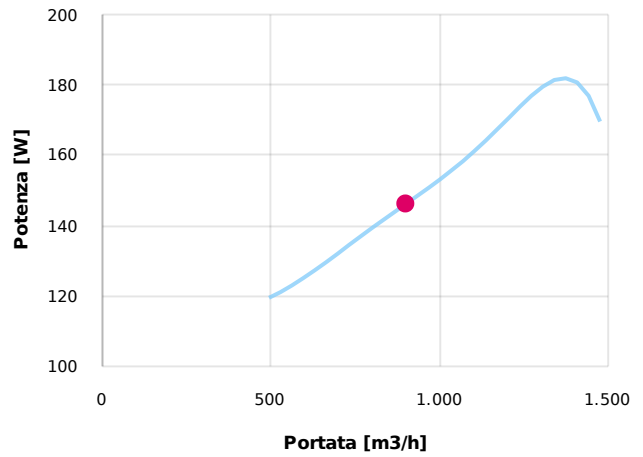
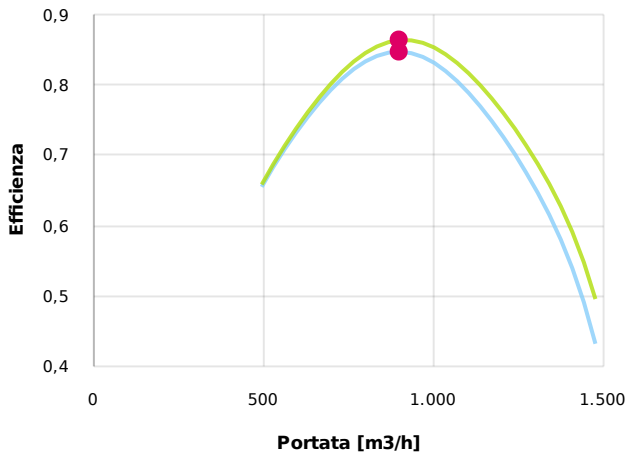
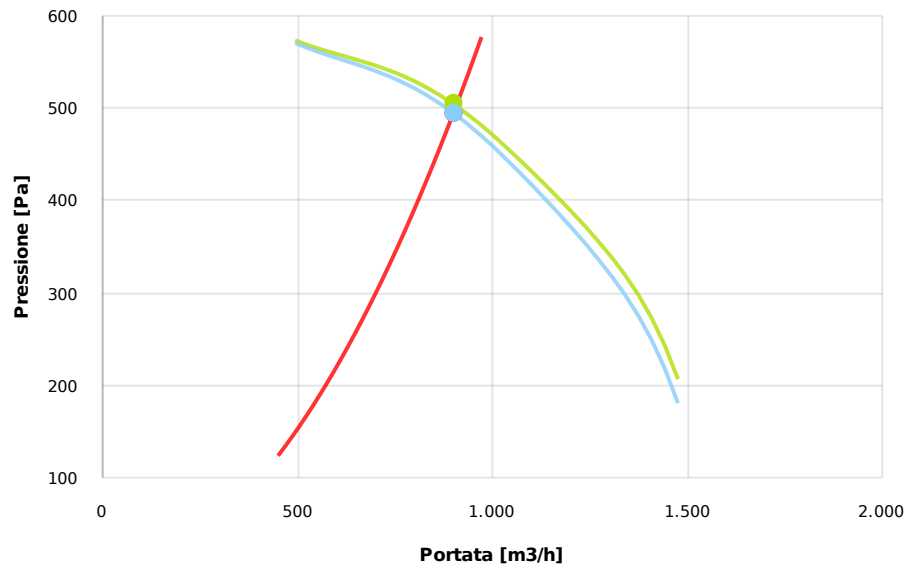
## Tabella motori

Classe IE	IE1
Taglia	63
Potenza[kW]	0.25
Corrente nominale[A]	0.71
Tensione[V]	400
Cos $\varphi$	0.78
n	0.65

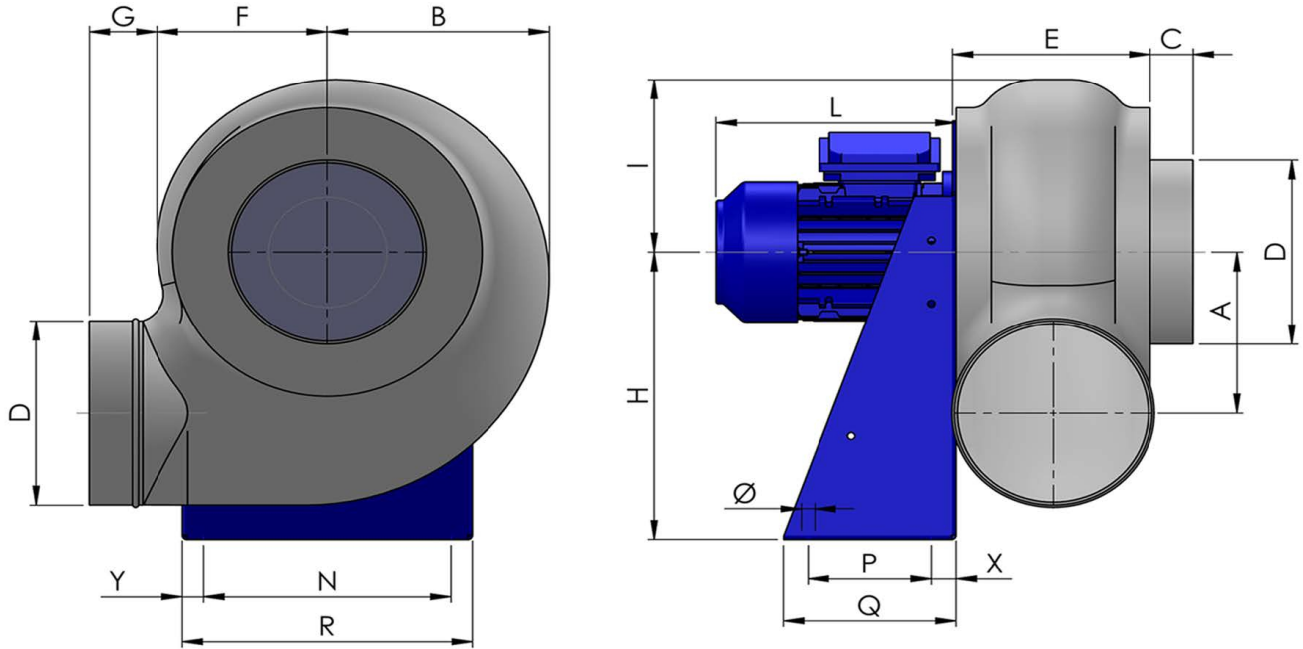
## Punto di lavoro

Q [m3/h]	900
Psta [Pa]	494.7
Ptot [Pa]	504.4
Pin [kW] [W]	146.2
nsta	0.847
ntot	0.863
Rpm	2800

— Pressione Totale — Pressione Statica — Curva di sistema



## Dimensioni



A	B	C	D	E	F	G	H	I	L	N	Ø	P	Q
173	228	35	200	185	170	55	310	190	210	225	11	100	140
			R				X					Y	
			290				20					175	

## Configurazioni & cad

