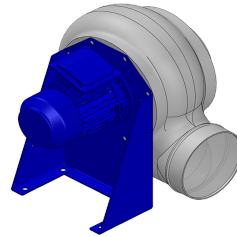


Dati di ricerca

Portata[m3/h]	596
Pressione[Pa]	359.3
Tipo di pressione	Psta
Alimentazione	all
Densità[m3/h]	1.205



Coclea stampata Pe - girante PP - Supporto motore in lamiera di acciaio verniciato polveri - Viteria acciaio INOX

Etichetta

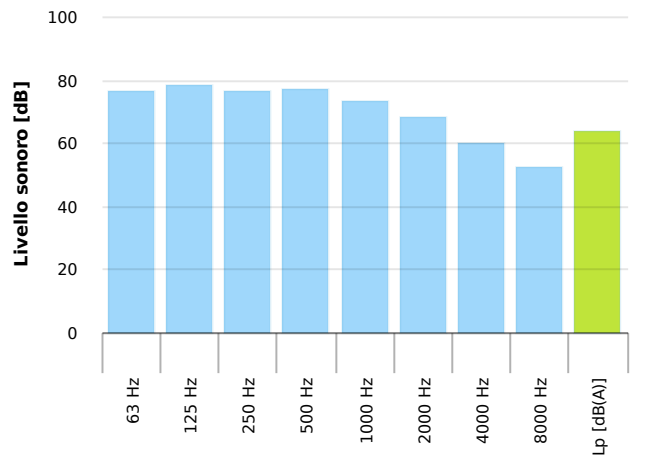
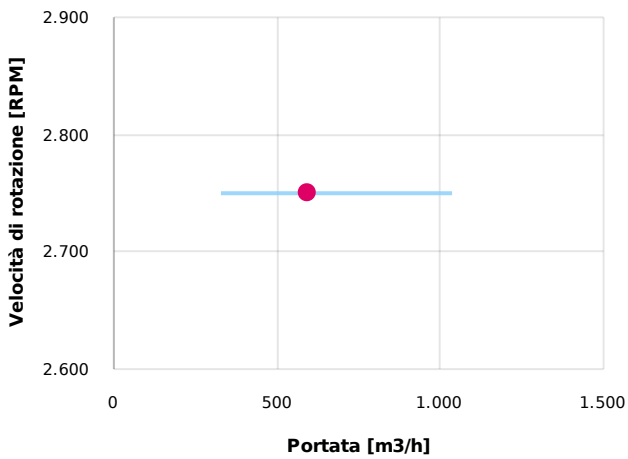
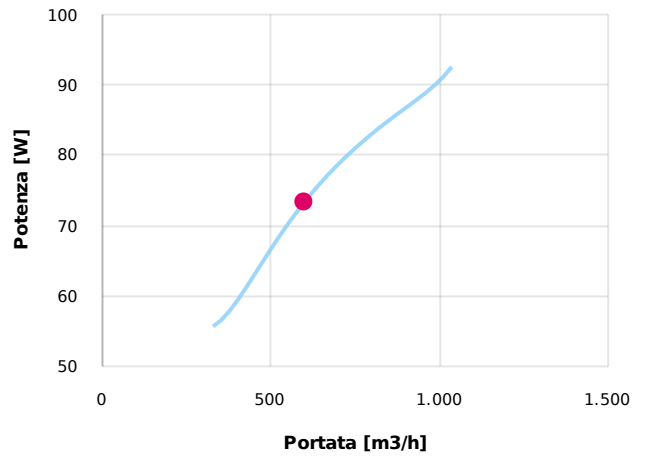
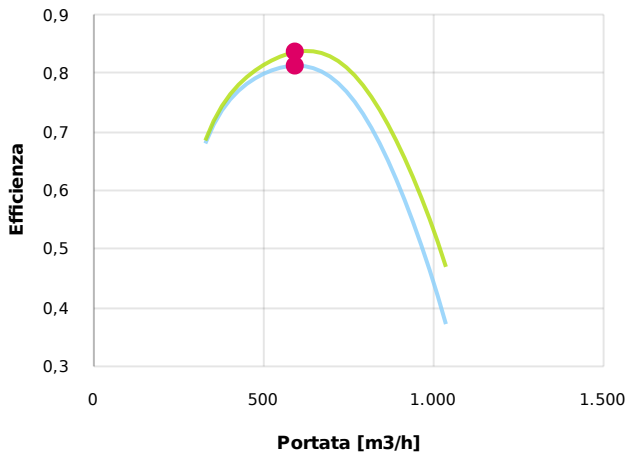
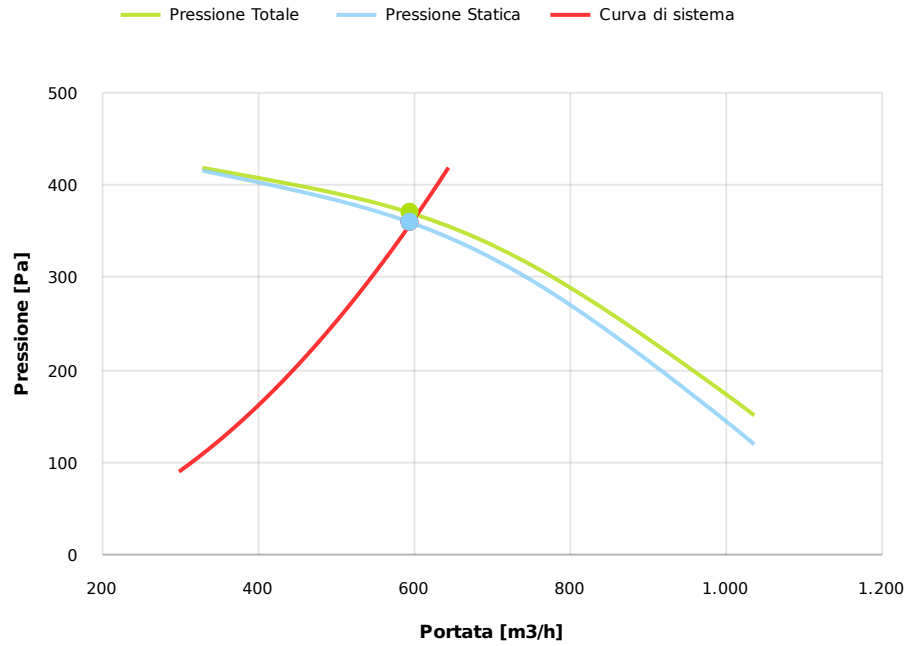
Codice	EVSP202
Tensione[V]	400
Fasi	3
Corrente nominale[A]	
Poli	2
Peso[kg]	9
Frequenza[Hz]	50
Velocità[rpm]	2750
Potenza[kW]	0.18
IP	55
INS	

Tabella motori

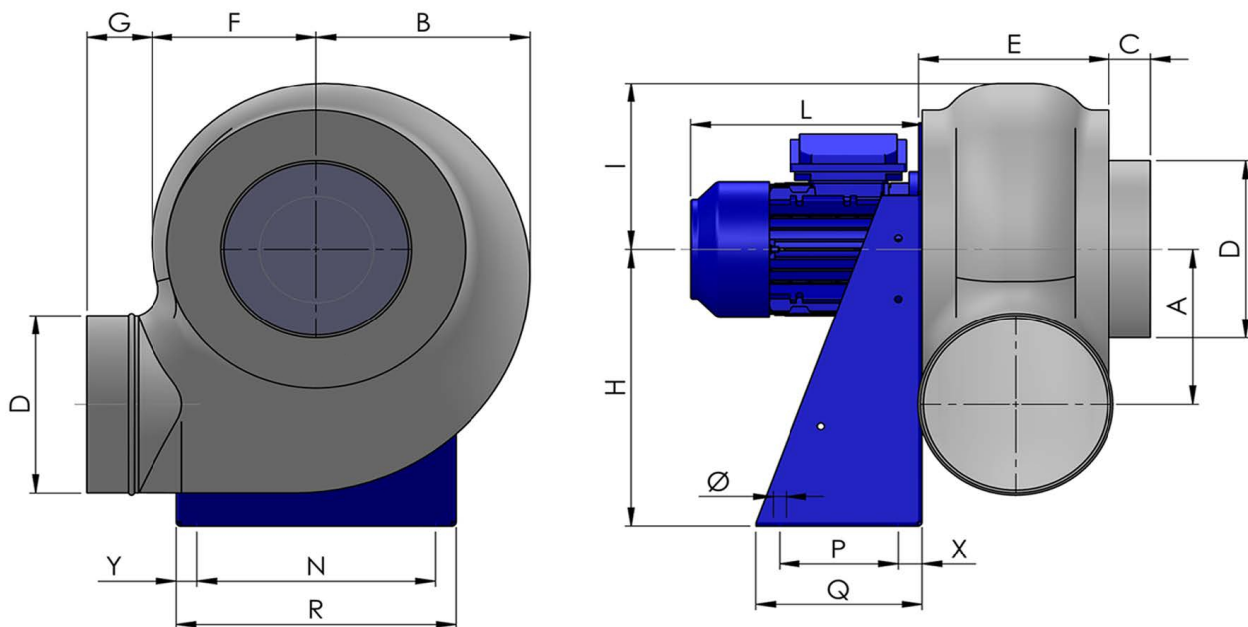
Classe IE	IE1
Taglia	63
Potenza[kW]	0.18
Corrente nominale[A]	0.55
Tensione[V]	400
Cos φ	0.75
n	0.63

Punto di lavoro

Q [m3/h]	596
Psta [Pa]	359.3
Ptot [Pa]	369.7
Pin [kW] [W]	73.17
nsta	0.813
ntot	0.836
Rpm	2750



Dimensioni



A	B	C	D	E	F	G	H	I	L	N	Ø	P	Q
140	180	35	160	160	138	55	250	150	195	200	11	100	140
			R				X						Y
			235				20						175

Configurazioni & cad

